

# West Region

CenterPoint Properties



## Markets:

- Bay Area
- Los Angeles
- Phoenix
- San Diego
- Seattle



Bob Andrews  
EVP, Head of West Region  
(562) 413-2147  
bandrews@centerpoint.com



Brian Moran  
SVP, Development  
(949) 783-8678  
bmoran@centerpoint.com



Pete Williams  
SVP, Investments  
(310) 692-9806  
pwilliams@centerpoint.com



Evan Lippow  
SVP, Asset Management  
(925) 595-8851  
elippow@centerpoint.com

## National Statistics



**61.3**  
Million SF



**301**  
Properties



**390**  
Tenants

# CenterPoint in the West

CenterPoint's West Region Team offers customers premium infill logistics solutions and responsive tenant support. We excel in infill redevelopment and strategic investments, partnering with customers to deliver modern facilities that help them unlock new opportunities in some of America's most competitive markets.

## INVESTMENTS

Nimble team of market experts that can move rapidly and close fast

Strong financial backing and a rock-solid reputation that give partners peace of mind

Proven track record of closing some of the industry's most complex deals

## ASSET MANAGEMENT

Dedicated in-house experts committed to our customers' success

Highly experienced regional construction teams that tailor facilities to customers' requirements

Long-standing vendor relationships that keep operations running smoothly and growing

## DEVELOPMENTS

Over 30 years of delivering innovative facilities near the country's top transportation hubs

Ingenious supply chain solutions built to tackle even the most complex logistical needs

Close collaborators with America's most respected designers and builders

## PROJECT SNAPSHOTS

### INVESTMENTS

**4400 and 4450 Ruffin Rd.  
San Diego, CA**



**202,546 SF**

Class A building in the heart of the premier submarket in San Diego

### ASSET MANAGEMENT

**5960 1st Ave. S  
Seattle, WA**



**150,100 SF on 5.6 Acres**

Recent reposition and 10-year lease executed with Goodwill

### DEVELOPMENTS

**16627 Avalon Blvd.  
Carson, CA**



**113,470 SF**

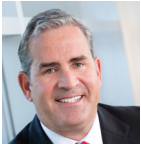
Redevelopment near Port of Long Beach



## Meet The Team

Our team has the expertise and industry connections to match your unique needs.

### WEST REGION



**Bob Andrews**  
Executive Vice President,  
Head of West Region  
bandrews@centerpoint.com



**Evan Lippow**  
Senior Vice President,  
Asset Management  
elippow@centerpoint.com



**Pete Williams**  
Senior Vice President,  
Investments  
pwilliams@centerpoint.com



**Brian Moran**  
Senior Vice President,  
Development  
bmoran@centerpoint.com



**Kim Rierson**  
Vice President,  
Construction  
krierson@centerpoint.com



**Greg Stumm**  
Vice President,  
Leasing  
gstumm@centerpoint.com



**Ashley Vanacore**  
Investment Officer  
avanacore@centerpoint.com



**Ryan Kelleher**  
Development Transaction Officer  
rkelleher@centerpoint.com



**Wes Payne**  
Leasing Manager  
wpayne@centerpoint.com



**Tyler Konkall**  
Transaction Manager  
tkonkal@centerpoint.com



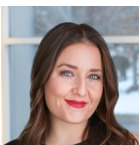
**Will Lagomarsino**  
Associate  
wlagomarsino@centerpoint.com



**Kevin Lao**  
Development Manager  
klao@centerpoint.com



**Doug Beckman**  
Development Manager  
dbeckman@centerpoint.com



**Bridget Pineros**  
Senior Development Manager  
bpineros@centerpoint.com



**Steve Rhoades**  
Project Manager  
srhoades@centerpoint.com



**Jamie Hamilton**  
Planning and Entitlement  
Associate  
jhamilton@centerpoint.com

# National Reach



As a leader in logistics infrastructure and transportation-advantaged properties, CenterPoint focuses on developing, acquiring and managing strategically located industrial real estate throughout the nation.

## Corporate and Regional Offices

### Corporate Headquarters

1808 Swift Drive  
Suite A  
Oak Brook, IL  
630.586.8000

### Los Angeles

3100 N. Sepulveda Blvd.  
Suite E  
Manhattan Beach, CA  
213.488.8700

### Irvine

2010 Main Street  
Suite 220  
Irvine, CA  
630.586.8000

### Oakland

1111 Broadway  
Suite 2130  
Oakland, CA  
510.827.1000

### Dallas

2021 McKinney Avenue  
Suite 525  
Dallas, TX  
972.991.9590

### Houston

945 Bunker Hill  
Suite 625  
Houston, TX  
832.856.4779

### New Jersey

250 Pehle Avenue  
Park 80 West, Plaza II  
Suite 704  
Saddle Brook, NJ  
201.221.1900

### Atlanta

3424 Peachtree Rd.  
Suite 2200  
Atlanta, GA  
630.586.8000

### South Florida

401 East Las Olas Blvd.  
Suite 1540  
Fort Lauderdale, FL  
954.308.7400