

# West Region

CenterPoint Properties



## Markets:

Los Angeles  
Northern California  
Phoenix  
San Diego  
Seattle

## West Region Team



Bob Andrews  
SVP, Asset Management  
(213) 488-8689  
[bandrews@centerpoint.com](mailto:bandrews@centerpoint.com)



Evan Lippow  
SVP, Investments  
(925) 466-5040  
[elippow@centerpoint.com](mailto:elippow@centerpoint.com)



Blake Kelley  
SVP, Development  
(213) 488-8693  
[bkelley@centerpoint.com](mailto:bkelley@centerpoint.com)

## National Statistics



**65.2**  
Million SF



**320**  
Properties

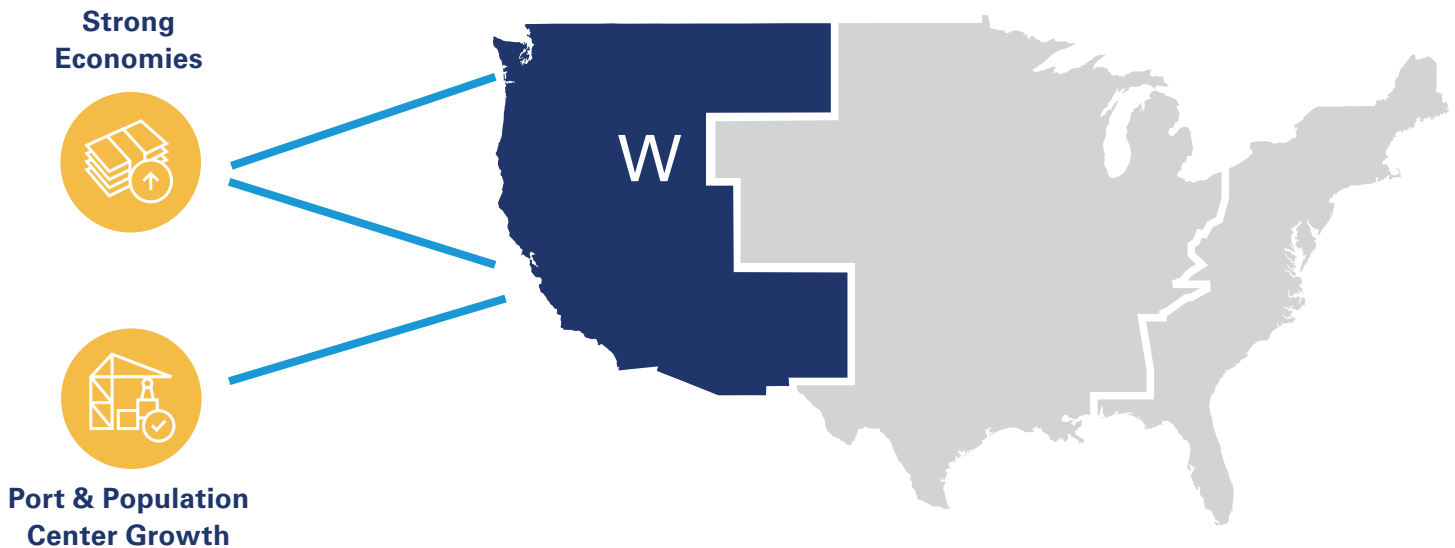


**428**  
Tenants

# About Us

CenterPoint is an industrial real estate company made up of dedicated thinkers, innovators and leaders with the creativity and know-how to tackle the industry's toughest challenges. And it's those kinds of problems — the delicate, the complex, the seemingly impossible — that we relish most. Because with an agile team, substantial access to capital and industry-leading expertise, those are exactly the kinds of problems we're built to solve.

## West Region Focus



CenterPoint targets markets that have strong economies, robust port activity and major population centers. Our West Region Team uses this strategy to secure complex deals and deliver logistically advantaged real estate solutions.





# CenterPoint has invested more than \$3.16 billion on the West Coast between 2015-2022.



## **Asset Management | 7.47 Acres**

19875-19899 Pacific Gateway Dr.  
Torrance, CA



## **Asset Management | 88,378 SF**

Mi Rancho Inc.  
425 Hester St., San Leandro, CA



## **Asset Management | 132,327 SF**

West Rancho Distribution Center  
14702 S. Maple St., Gardena, CA



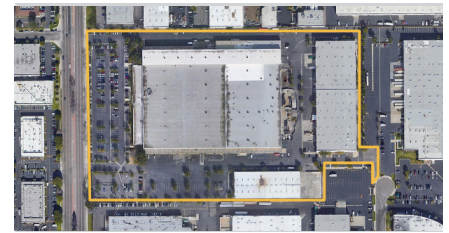
## **Asset Management | 1,631,743 SF**

One Ontario CenterPoint  
5600 E. Airport Dr., Ontario, CA



## **Acquisition | 264,450 SF**

Low-coverage Warehouse  
2850 E. Del Amo Blvd., Carson, CA



## **Acquisition | 397,837 SF**

Three-Building Industrial Park  
2701 S. Harbor Blvd., Santa Ana, CA



## **Acquisition | 307,222 SF**

Low-coverage Warehouse  
268 E. Gardena Blvd., Carson, CA



## **Acquisition | 208,180 SF**

Low-coverage Warehouse  
41099 Boyce Road, Fremont, CA



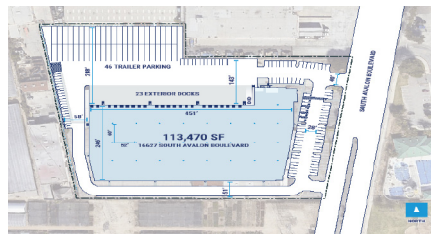
## **Development | 214,000 SF**

Greenleaf Business Center  
9883 Santa Fe Springs Rd.  
Santa Fe Springs, CA



## **Pre-Development | 41,000 SF**

Rare Infill Cross-Dock Facility  
3900 Baybar, Pico Rivera, CA



## **Development | 113,470 SF**

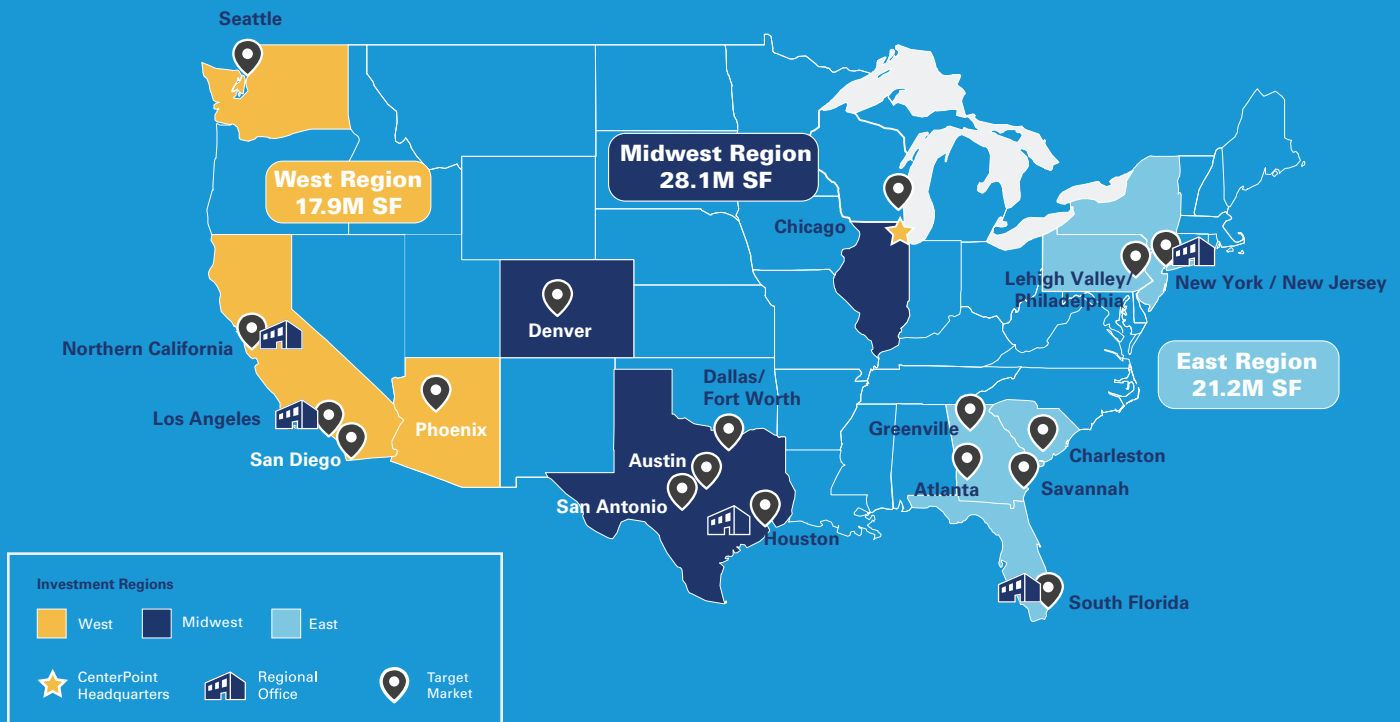
16627 S. Avalon Blvd., Carson, CA



## **Development | 414,400 SF**

CenterPoint Seattle  
8801 Marginal Way, Tukwila, WA

# National Reach



As a leader in logistics infrastructure and transportation-advantaged properties, CenterPoint focuses on developing, acquiring and managing strategically located industrial real estate throughout the nation.

## Corporate and Regional Offices

### Corporate Headquarters

1808 Swift Drive  
Suite A  
Oak Brook, IL 60523  
630.586.8000

### Los Angeles

725 South Figueroa Street  
Suite 3005  
Los Angeles, CA 90017  
213.488.8700

### Northern California

1111 Broadway  
Suite 2130  
Oakland, CA 94607  
510.827.1000

### South Florida

401 East Las Olas Blvd.  
Suite 1540  
Fort Lauderdale, FL 33301  
954.308.7400

### Houston

945 Bunker Hill  
Suite 625  
Houston, TX 77024  
832.856.4779

### Irvine California

2010 Main Street  
Suite 220  
Irvine, CA 92614  
630-586-8000

### New Jersey

Park 80 West, Plaza II  
250 Pehle Avenue  
Suite 704  
Saddle Brook, NJ 07663  
201.221.1900