

Container / Trailer Parking

NWC of Noel & Patterson Road, Joliet, IL 60421

SUMMER 2022 DELIVERY

CENTERPOINT WAY

±76.04 ACRES AVAILABLE

LEASED

PATTERSON ROAD

NOEL ROAD

Property Highlights



76.04
Acres Available



2,389
Trailer Stalls Available

Lot 1

- + **Land Area:** 26.14 AC
- + **FULLY LEASED**

Lot 2

- + **Land Area:** 26.14 AC
- + **Trailer Stalls:** 904 (Divisible)

Lot 3

- + **Land Area:** 36.04 AC
- + **Trailer Stalls:** 1,075 (Divisible)

Lot 4

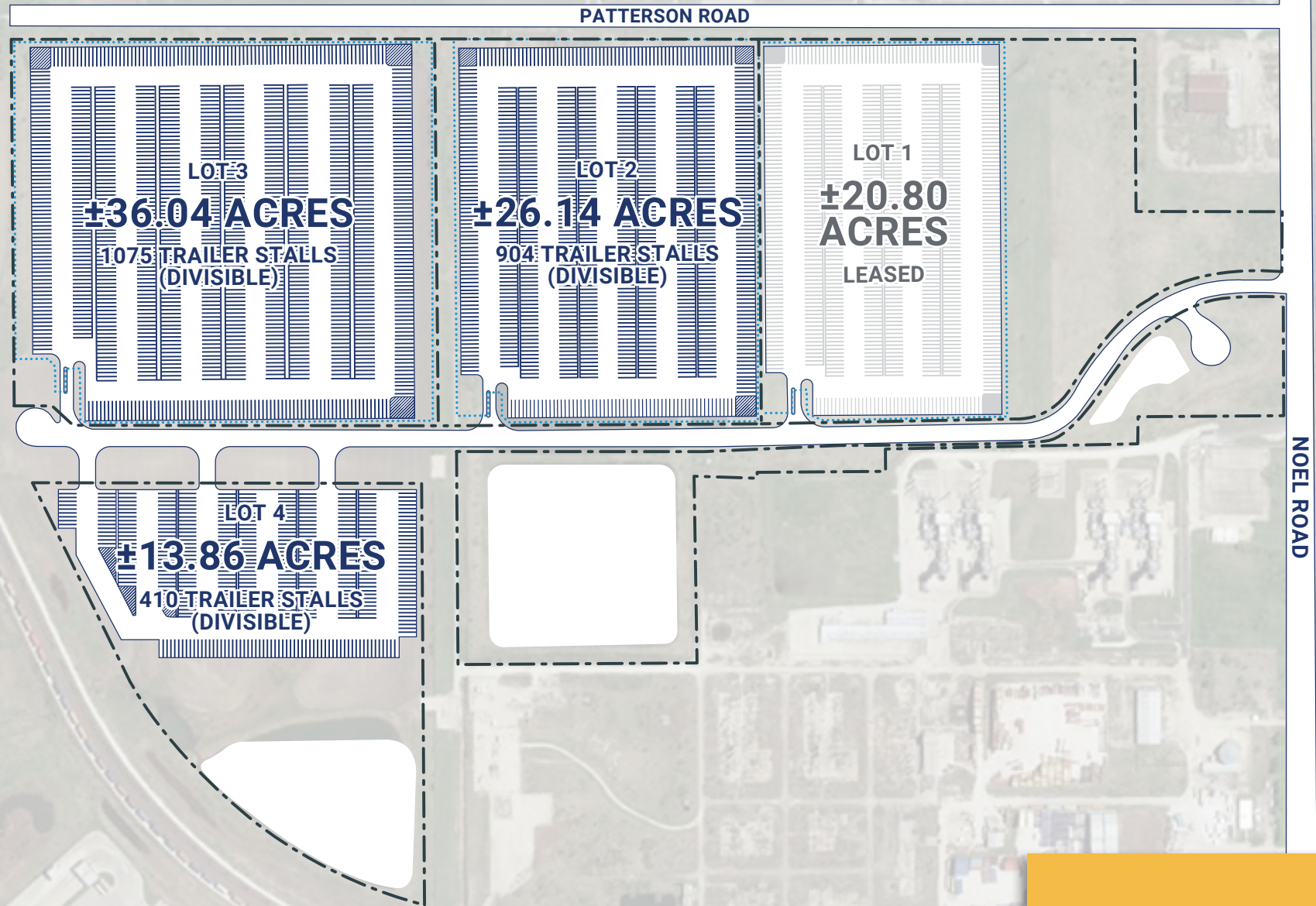
- + **Land Area:** 13.86 AC
- + **Trailer Stalls:** 410 (Divisible)



Campus Advantages at CenterPoint Intermodal Center

- + North America's Largest Inland Port with the lowest drayage charges in the entire region
- + Public bus service with access to deep and skilled labor
- + Retail amenities; truck center with scale
- + Low Will County real estate taxes
- + Full interchanges at I-55 and Arsenal Road, I-80 and I-55, I-80 and Houbolt, & I-80 and Route 53
- + Pre-designated Foreign Trade Zone & Enterprise Zone
- + ±40 miles to Chicago
- + Direct access to the Union Pacific Joliet Intermodal Terminal (JIT) and BNSF Logistics Park Chicago (LPC)
- + Heavyweight capacity roads
- + On-site overflow container storage 24/7
- + FTZ savings
- + No trailer parking ratio restrictions
- + Flexible zoning for manufacturing, distribution or container operations

Site Plan



SUMMER 2022 DELIVERY

Key Distances

Measurements based on one-way travel

Union Pacific Joliet Intermodal Terminal

3.04 miles

BNSF Logistics Park Chicago

4.1 miles

Downtown Chicago

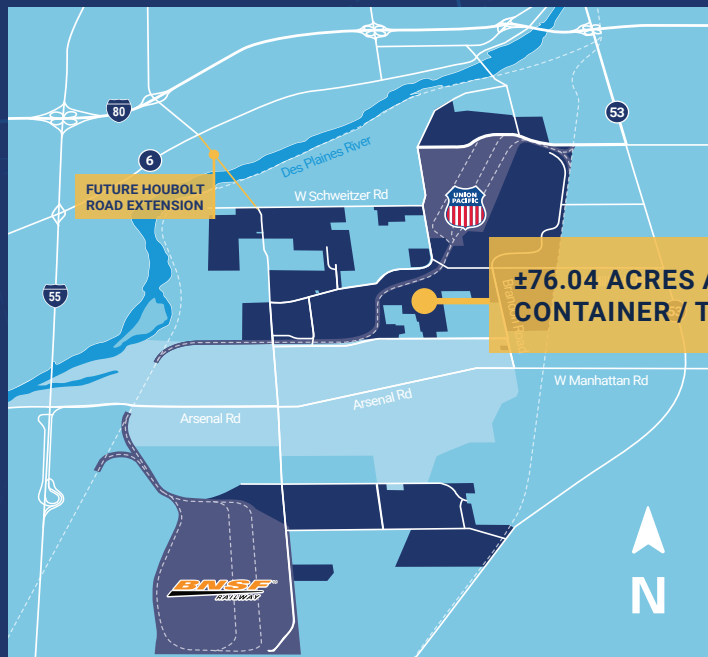
40 miles

Interstate 55

6.2 miles

Interstate 80

8.5 miles



CenterPoint INTERMODAL CENTER

centerpoint-intermodal.com



O'HARE INTERNATIONAL
AIRPORT



MIDWAY INTERNATIONAL
AIRPORT



CENTERPOINT INTERMODAL CENTER
JOLIET/ELWOOD

NAI Hiffman

Dan Leahy
630.691.0604
dleahy@hiffman.com

Adam Roth, CCIM, SIOR
630.691.0607
aroth@hiffman.com

CenterPoint

Brian McKiernan
630.586.8113
bmckiernan@centerpoint.com

All information is subject to verification and no liability for errors or omissions is assumed.
centerpoint.com