

Container / Trailer Parking Available at North America's Largest Inland Port

CenterPoint Intermodal Center | Lot 27: Brandon Road, Joliet, IL

CenterPoint Intermodal Center | Joliet, IL

LOT 27



Highlights

Lot A:

- ±7.97 AC available
- ±147 Trailer stalls
- ±17 Car parking

Lot B:

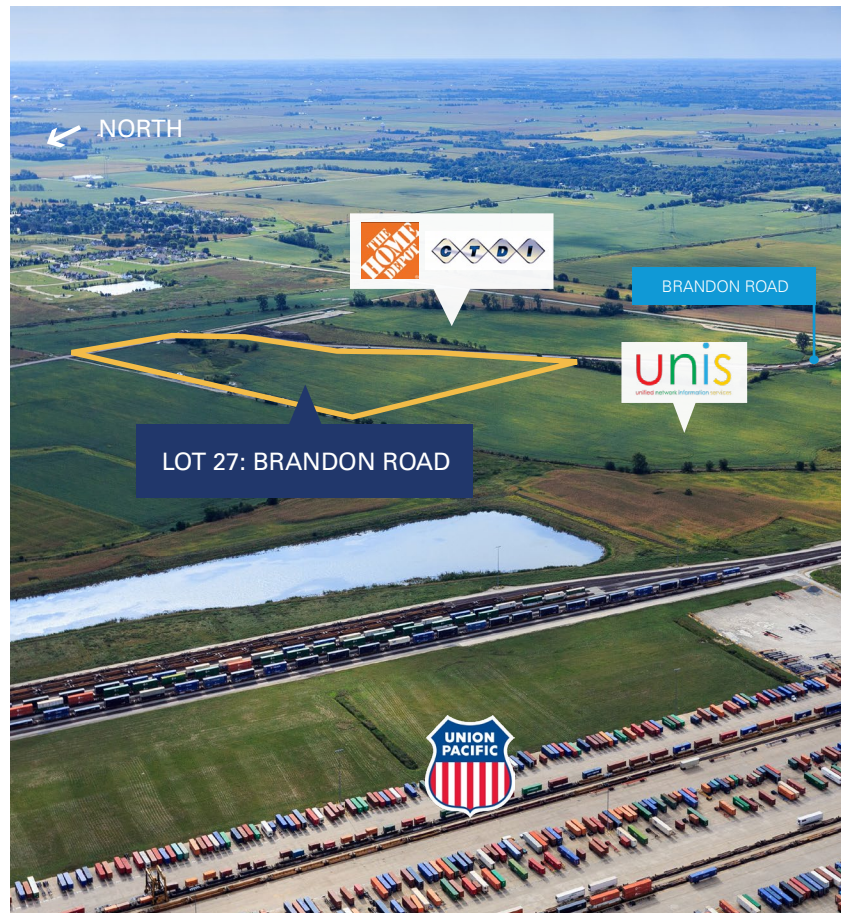
- ±8.15 AC available
- ±194 Trailer stalls
- ±16 Car parking

Lot C:

- ±8.91 AC available
- ±239 Trailer stalls
- ±16 Car parking

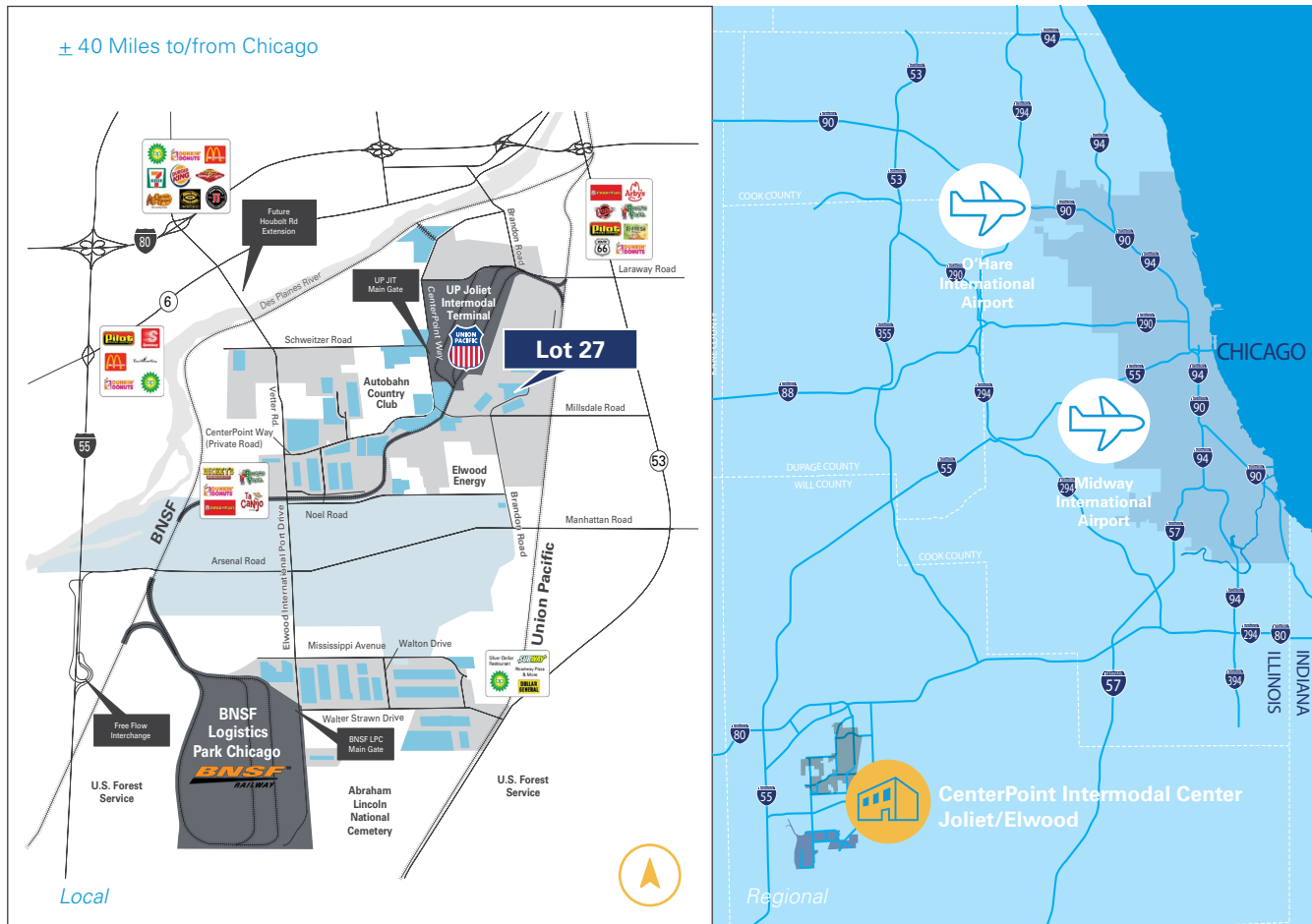
Total Available:

- ±25.03 AC available
- ±1,090,309 SF available
- ±580 Trailer stalls
- ±49 Car parking



Container / Trailer Parking Available at North America's Largest Inland Port

CenterPoint Intermodal Center | Lot 27: Brandon Road, Joliet, IL



Campus Advantages

- + Lowest drayage charges in the entire region
- + Direct access to the Union Pacific Joliet Intermodal Terminal (JIT) and BNSF Logistics Park Chicago (LPC)
- + North America's Largest Inland Port
- + Pre-designated Foreign Trade Zone & Enterprise Zone
- + Heavyweight capacity roads
- + On-site overflow container storage 24/7
- + Full interchange at I-55 and Arsenal Road
- + Minutes from intersection of I-55 and I-80
- + Low Will County real estate taxes
- + Flexible zoning for manufacturing, distribution or container operations
- + 40 ± miles to Chicago

About CenterPoint

CenterPoint is a market leader in the development, redevelopment, acquisition and management of industrial real estate and transportation infrastructure to enhance business and supply chain efficiency. The company invests in major coastal and inland port logistics markets anchoring North America's principal freight lanes.

All information is subject to verification and no liability for errors or omissions is assumed.

Exclusive Marketing Agent



Dan Leahy, SIOR
630.691.0604
dleahy@hiffman.com

Adam Roth, CCIM, SIOR
630.691.0607
aroth@hiffman.com

Owned and Developed By



Brian McKiernan
630.586.8113
bmckiernan@centerpoint.com

centerpoint.com